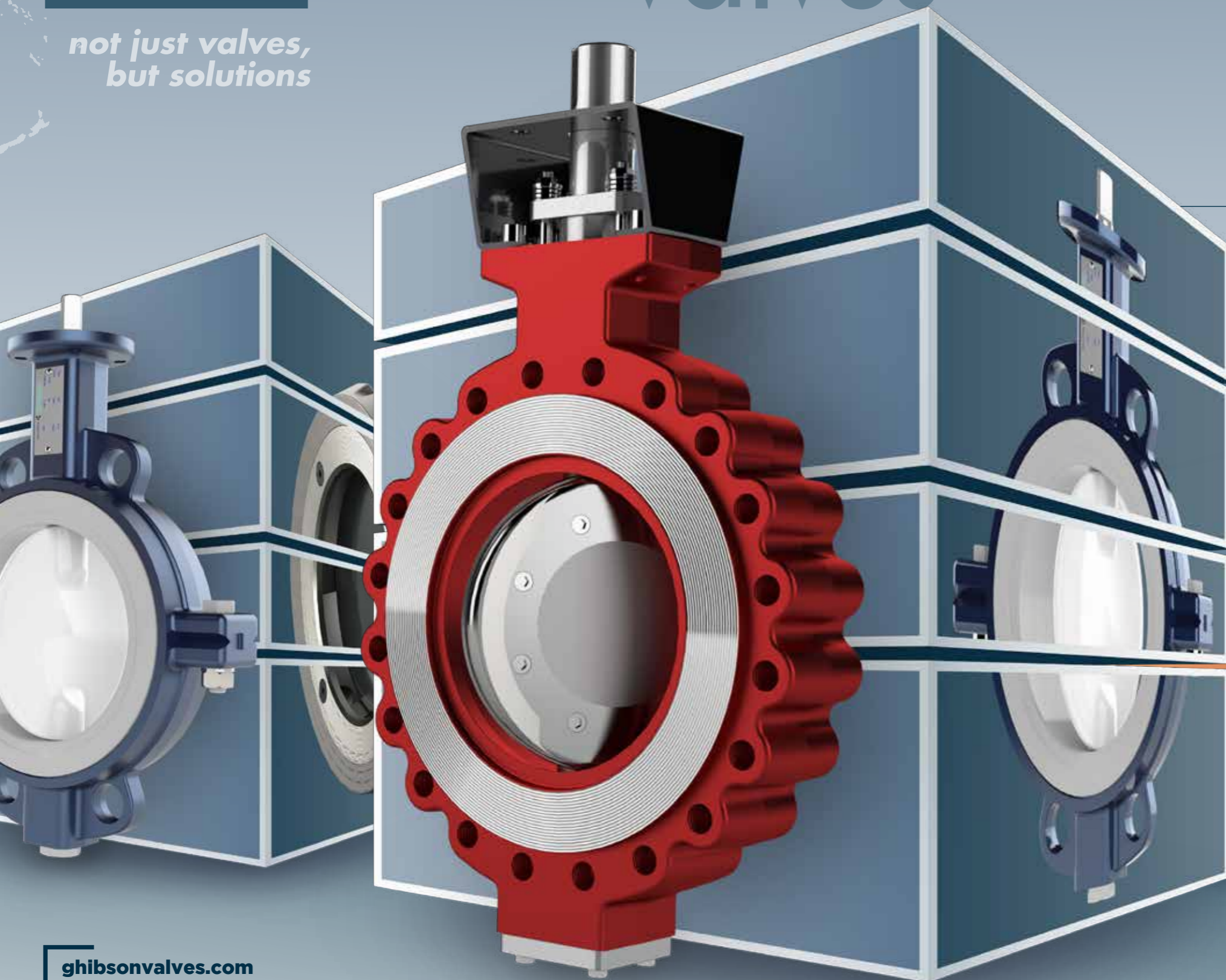


# G HIBSON valves

*not just valves,  
but solutions*



## G HIBSON ITALIA

can now boast of more than 35 years of experience in manufacturing of industrial valves. We export our products all over the world always providing our customers the best assistance during all the phases: design, installation, maintenance.

### MARKET SEGMENTS

Marine - Water Treatment - Pulp & Paper  
Power Plant - Nuclear Plant - HVAC  
Chemical & Petrochemical  
Powder Conveying Systems  
Food & Beverage

### APPLICATIONS

Steam isolation - Vacuum service - Refining  
Cooling Water systems -  
Metallurgical processes  
Powder transportation & storage  
Oil field recovery - Liquid natural gas  
Steam service - Steam Turbine  
Saltwater Service - District heating & cooling  
Hot Air & Smokes -  
Chemicals storage & transportation  
Food & Beverage processes

### PRODUCTS

#### BUTTERFLY VALVES

- Rubber Seated
- PTFE Seated
- High Performance
- Damper Valves

#### CHECK VALVES

- Disc type
- Swing type

#### ACTUATORS & OPTIONS

- Pneumatic
- Electric
- Hydraulic

#### CONTROL SYSTEMS

#### CUSTOMIZED VALVES



# CHECK VALVES



## RUBBER SEATED

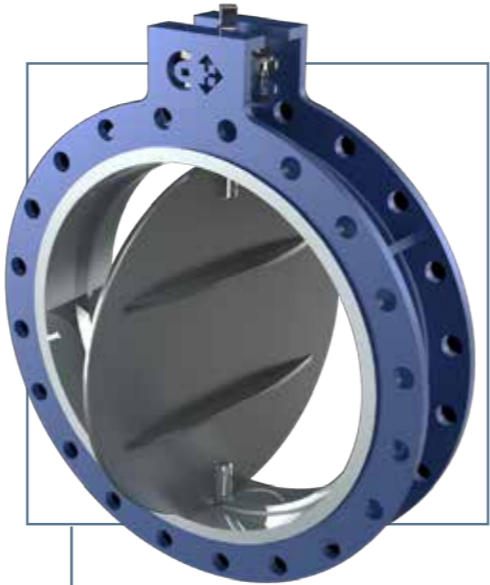
designed to fit in industrial applications from powder conveyance to marine and petrochemical requirements.

series	type	DN	Pmax	vacuum	Flanges
KI	Wafer, Lug	DN40÷500	16bar	Y	PN 10-16 • A150
	Wafer, Lug	DN600÷800	10bar	Y	PN 6-10-16 • A150
	Double Flange	DN80÷600	16bar	Y	PN 10-16 • A150
PD	Wafer, Lug	DN80÷500	10bar	Y	PN 6-10-16 • A150
	Wafer, Lug	DN600	6bar	Y	PN 6-10-16 • A150
KA	Wafer, Lug	DN40÷800	20bar	Y	PN 10-16 • A150
KX	Wafer	DN50÷250	25bar	Y	PN 25
	Lug	DN50÷200	25bar	Y	PN 25

## DISC TYPE

represent an extensive combination of solutions starting from low pressure design up to 160 Bars.

series	type	DN	Pmax	vacuum	Flanges
GA	015	DN15÷80	52bar	Y	PN 6÷40 • A150÷300
		DN100	52bar	Y	PN 10÷40 • A150÷300
GB	015	DN15÷80	52bar	Y	PN 6÷40 • A150÷300
		DN100	52bar	Y	PN 10÷40 • A150÷300
	023	DN15÷100	6bar	Y	PN 6÷16 • A 150
GN	011, 015, 115	DN15÷100	52bar	Y	PN 10÷40 • A150÷300
GT	011, 015, 115	DN15÷100	160bar	Y	PN 63÷160 • A600÷900
GH	011, 015	DN125÷200	25bar	Y	PN 10÷25 • A150



## DAMPER VALVES

fully manufactured and designed according to customer requirements, mainly used with high temperature combined with low pressure applications.

series	type	DN	Pmax	vacuum	Flanges
FA	Wafer, Double Flange	DN150÷2000	ut to 3bar	N	PN 6-10-16 • A150

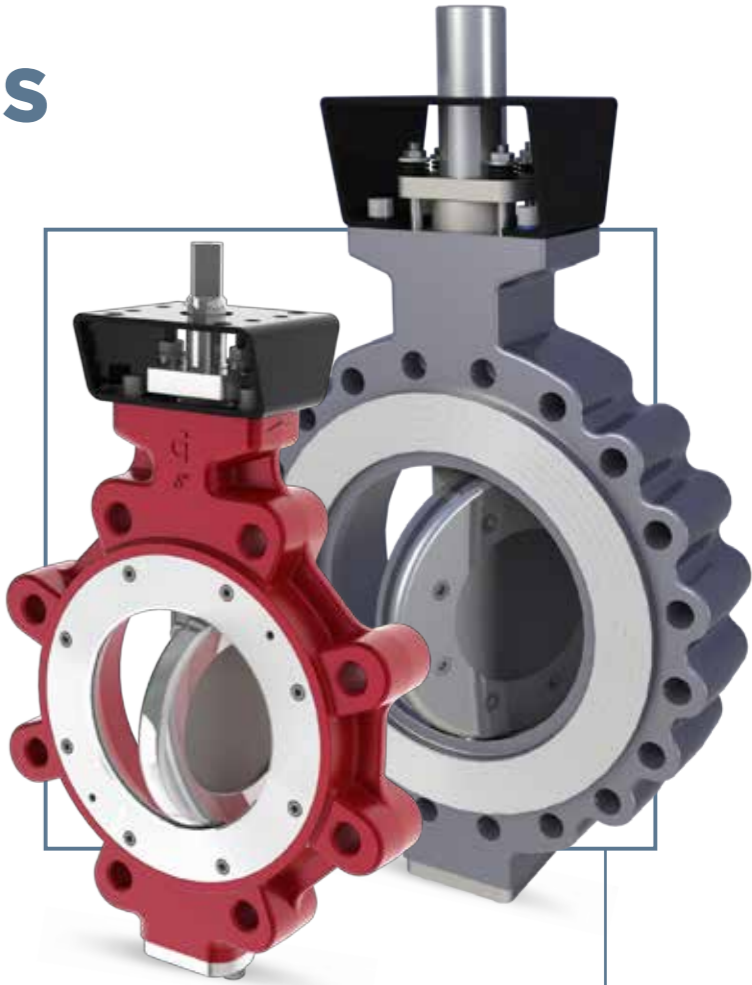
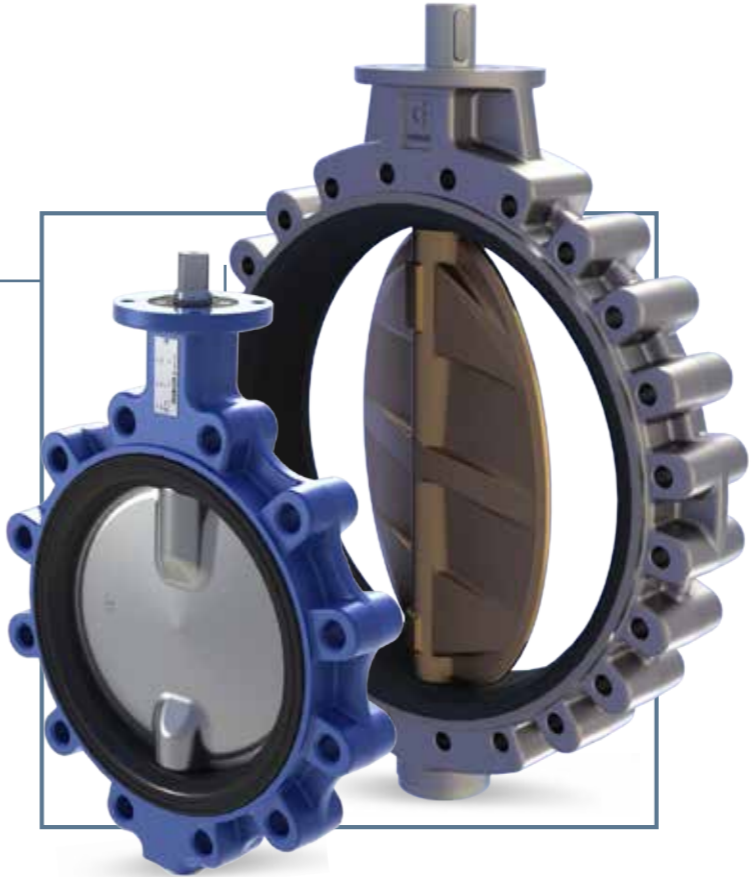


## SWING TYPE

manufactured in many materials as well as pressure ratings and flange connections. Available for general purpose applications and also with spring loaded flap.

series	type	DN	Pmax	vacuum	Flanges
GS	011, 015	DN40÷300	52bar	Y	PN 6÷40 • A150÷300
	011, 015	DN350÷500	25bar	Y	PN 6÷25 • A150

# BUTTERFLY VALVES



## HIGH PERFORMANCE

specifically designed for high demanding applications where the valve performance is critical. Available in different materials and ratings.

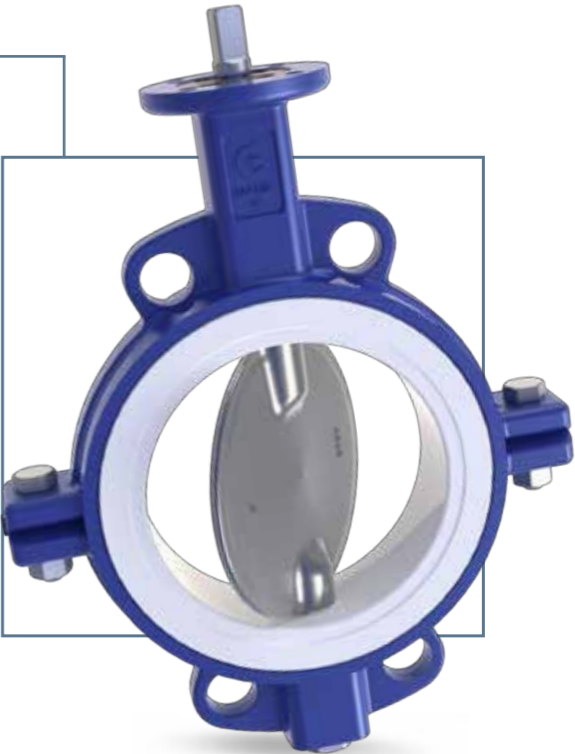
The Fire safe version is Fire tested to API 607-6th ed.

series	type	DN	Pmax	vacuum	Flanges
HD	Wafer, Lug	DN50÷500	25bar	Y (not metal seat)	PN 10-16-25 • A150

## PTFE SEATED

available in a wide range of materials combinations, and specifically designed for the chemical industry and heavy duty applications.

series	type	DN	Pmax	vacuum	Flanges
TT	Wafer, Lug	DN50÷400	10bar	Y	PN 10-16 • A150
	Wafer, Lug	DN500	6bar	(not PTFE disc)	PN 10-16 • A150



# MATERIALS

Very large choice of materials including valves of every alloy of **Carbon** or **Stainless Steel**, **Aluminium-bronze**, **Aluminium**, **Superduplex**, **Austenitic Stainless steel**, **Bronze**, **Inconel 625**, **Hastelloy®**, **Monel®**, **6MO**. On request European castings and other materials can be supplied, such as: **LCB**, **Uranus**, **Alloy**, **DUPLEX**, **Special steels**, **Special bronzes**.

We manufacture valves seated with many elastomer types - **nitrile rubber**, **copolymer EPDM/EPDM HT**, **NBR/FKM**, **carboxide**, **fluoroelastomer**, **polychloroprene**, **natural rubber**, **silicon rubber**, **chlorosulfonated polyethylene**, **Polypropylene**, **PTFE**, **RTFE-PTFE reinforced**, **Polymer UHT...** with several different disc coatings such as **RILSAN®**, **Halar®**, **Chenisol®**, **PTFE**, **PFA** etc.

# CONTROL SYSTEMS

Gibson designs and supplies complete remote control solutions for: pneumatic controls, hydraulic and electro-hydraulic controls plus electric controls including process instrumentation.

Gibson designs and produces the systems as per Customer requirements and/or as per proposals specifically made by our Design & Technical dpt.



# CUSTOMIZED VALVES

*Gibson has over 30 years experience in working with OEMs, Engineering companies and end users in developing customized solutions for specific industrial applications (ex. Marine applications, Chemical processing, Powder Conveying Systems etc.).*

*Gibson's R&D department is continuously improving performances in order to fulfill the customer needs by designing taylor made "fit for purpose" solutions.*



# ACTUATORS & OPTIONS

Gibson offers a wide range of actuators and accessories for valve automation. Normally supplied as part of complete assemblies with valves divided into the following types:

## PNEUMATIC

Pneumatic actuators are based on rack and pinion technology, very compact and resistant. Available with different options for any kind of industrial applications and ambient conditions. With all types of accessories. Standard/special executions.



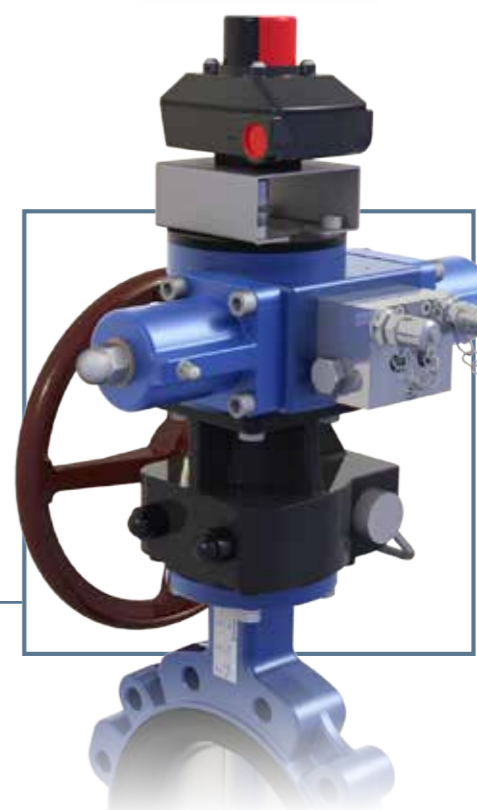
## ELECTRIC

Electric actuators are available in different versions for ON-OFF and/or regulating applications. Electric actuators also include ATEX versions as well a wide range of customizations.



## HYDRAULIC

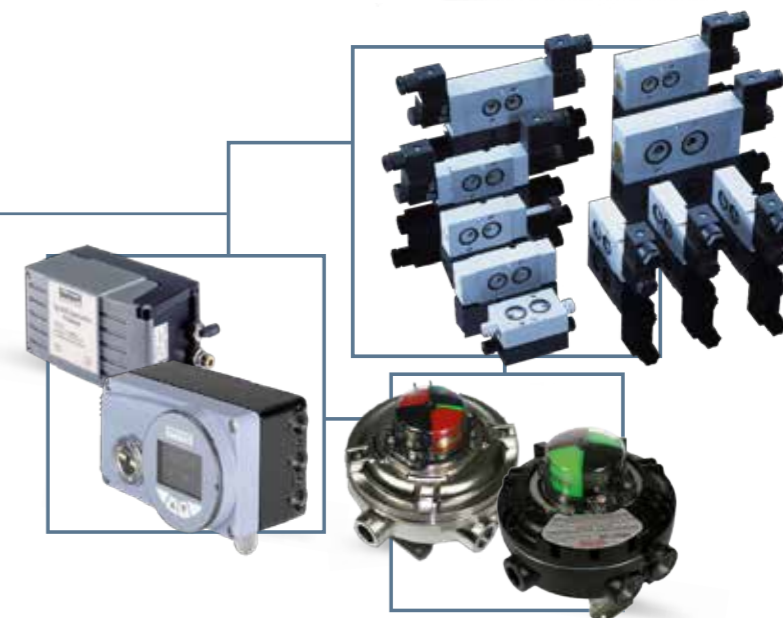
Gibson's own manufactured hydraulic actuators (ARES series) are designed to fulfill the specific requirement in industrial applications: compact design and high performance are the main characteristics of this product range.



All Gibson's actuators can be supplied for safe areas as well as in conformity with ATEX directive.

Pneumatic and hydraulic actuators can be fitted with solenoid valves, switch boxes and positioners, in many different executions and IP protection degrees.

Gibson has a wide range to propose and is however always ready to find new products and solutions.

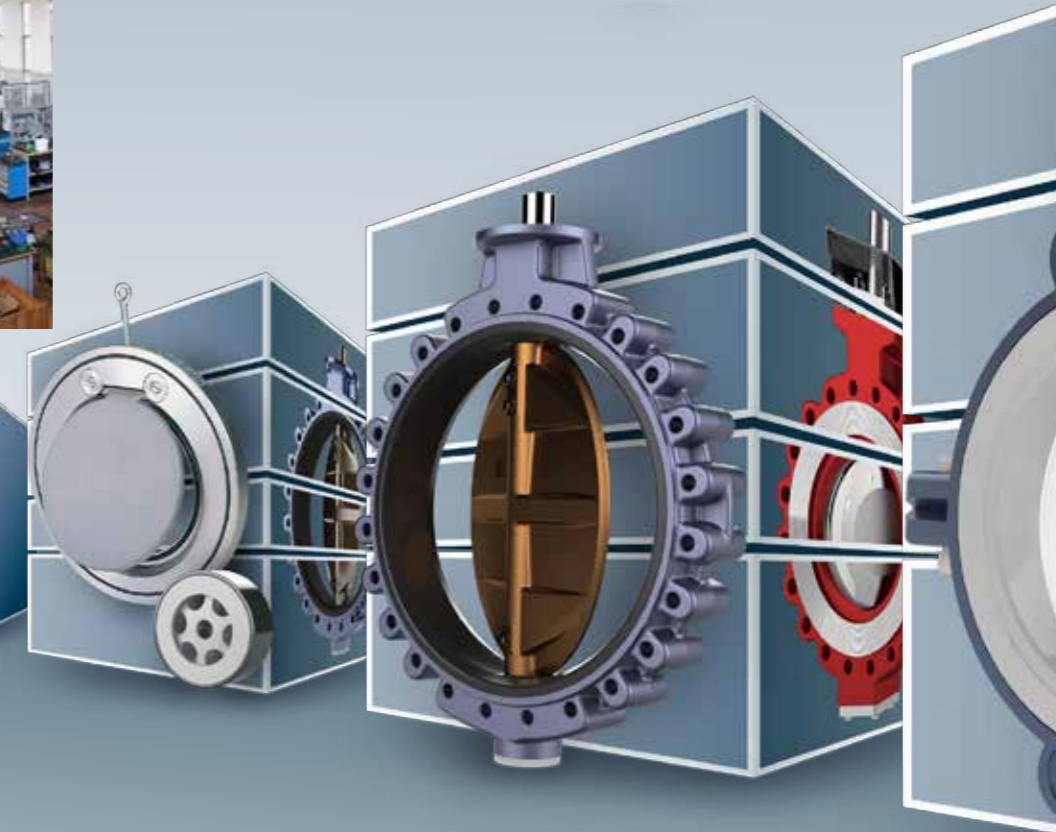




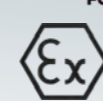
ghibsonvalves.com



**GHIBSON**  
valves



## CERTIFICATIONS



**Ghibson Italia srl**

Via Dozza, 2 40069 Zola Predosa BO Italy  
tel +39 051 835711 info@ghibson.it

ghibsonvalves.com